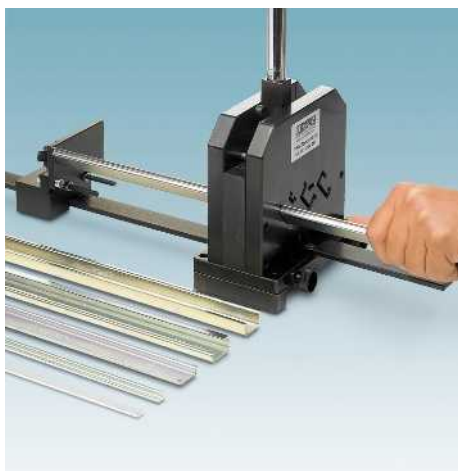


Component mounting

NS 15 DIN rails, flat design



- The design of the DIN rails complies with European standard EN 60715
- High degree of dimensional accuracy and surface finish
- All DIN rails are also available cut to length

The DIN rails are available with various surface coatings and are suitable for the following applications:

- Zinc plated, for indoor applications
- White passivated, for indoor applications
- Zinc plated and thick layer passivated, for indoor and protected outdoor applications
- Aluminum; as a result of their improved conductivity, these versions can also be used as PEN busbars

Notes:

For dimensional drawings and ordering examples, see page 581.

For PPS ... DIN rail profile cutters, see page 402.

¹⁾ Please specify the desired length in millimeters when placing your order. See order example.

²⁾ Please specify the desired length and borehole when placing your order. See order example.



Steel, galvanized and thick layer passivated

General data

Material / coating

Description

Color

DIN rail, unperforated, in accordance with EN 60715 - 15 x 5.5 mm, galvanized and thick layer passivated, supply length: 2 m

silver

DIN rail, unperforated, in accordance with EN 60715 - 15 x 5.5 mm, galvanized and thick layer passivated, cut to length according to customer specifications¹⁾

silver

DIN rail, unperforated, in accordance with EN 60715 - 15 x 5.5 mm, galvanized and thick layer in accordance with, cut to length acc. to customer specifications and provided with mounting holes²⁾

silver

DIN rail, perforated, in accordance with EN 60715 - 15 x 5.5 mm, galvanized and thick layer passivated, supply length: 2 m

silver

DIN rail, perforated, in accordance with EN 60715 - 15 x 5.5 mm, galvanized and thick layer passivated, cut to length according to customer specifications¹⁾

silver

DIN rail, perforated, dimensions in accordance with EN... EN 60715 - 15 x 5.5 mm, white passivated, low design, supply length: 2 m

white

DIN rail, perforated, dimensions in accordance with EN 60715 - 15 x 5.5 mm, supply length: 2 m, **material: aluminum**

silver

Technical data

Steel / Galvanized, passivated with a thick layer

Ordering data

Type	Order No.	Pcs./Pkt.
NS 15 UNPERF 2000MM	1401695	5
NS 15 UNPERF/...	1208089	1
NS 15 UNPERF/SO/...	1208092	1



Steel, galvanized and thick layer passivated



Steel, galvanized and white passivated



Aluminum

Technical data
Steel / Galvanized, passivated with a thick layer

Ordering data

Type	Order No.	Pcs./Pkt.
NS 15 PERF 2000MM	1401682	5
NS 15 PERF/...	1208102	1

Technical data
Steel / Galvanized, white passivated

Ordering data

Type	Order No.	Pcs./Pkt.
NS 15 WH PERF 2000MM	1204096	5

Technical data
Aluminum / uncoated

Ordering data

Type	Order No.	Pcs./Pkt.
NS 15 AL PERF 2000MM	1401763	5

Component mounting

NS 35 DIN rails, flat design



- The design of the DIN rails complies with European standard EN 60715
- High degree of dimensional accuracy and surface finish
- All DIN rails are also available cut to length

The DIN rails are available with various surface coatings and are suitable for the following applications:

- Zinc plated, for indoor applications
- White passivated, for indoor applications
- Zinc plated and thick layer passivated, for indoor and protected outdoor applications
- Aluminum; as a result of their improved conductivity, these versions can also be used as PEN busbars

Notes:

For dimensional drawings and ordering examples, see page 581.

For PPS ... DIN rail profile cutters, see page 402.

¹⁾ Please specify the desired length in millimeters when placing your order. See order example.

²⁾ Please specify the desired length and borehole when placing your order. See order example.



Steel, galvanized and thick layer passivated

General data

Material / coating

Technical data

Steel / galvanized, passivated with a thick layer

Ordering data

Description	Color
DIN rail, unperforated , in accordance with EN 60715 - 35 x 7.5 mm, galvanized and passivated with a thick layer, low design, supply length: 2 m	silver
DIN rail, unperforated , in accordance with EN 60715 - 35 x 7.5 mm, galvanized and thick layer passivated, low design, supply length: 1 m	silver
DIN rail, unperforated in accordance with EN 60715 - 35 x 7.5 mm, galvanized and thick layer passivated, low design, cut to length according to customer specifications ¹⁾	silver
DIN rail, unperforated in accordance with EN 60715 - 35 x 7.5 mm, galvanized and thick layer passivated, low design, cut to length according to customer specifications and provided with mounting holes ²⁾	silver
DIN rail, unperforated , dimensions in accordance with EN 60715 - 35 x 7.5 mm, white passivated, low design, supply length: 2 m	white
DIN rail, unperforated , dimensions in accordance with EN 60715 - 35 x 7.5 mm, galvanized, low design, supply length: 2 m	silver
DIN rail, unperforated , dimensions in accordance with EN 60715 - 35 x 7.5 mm, low design, supply length: 2 m, Material: copper	copper-colored

Type	Order No.	Pcs./Pkt.
NS 35/ 7,5 UNPERF 2000MM	0801681	5
NS 35/ 7,5 UNPERF 1000MM	1207649	20
NS 35/ 7,5 UNPERF/...	1208115	1
NS 35/ 7,5 UNPERF/SO/...	1208128	1

DIN rail end piece

for DIN rail NS35/7.5

Accessories

NS 35/ 7,5 CAP	1206560	100
-----------------------	----------------	-----



Steel, galvanized and white passivated



Steel, galvanized



Copper

Technical data
Steel / galvanized, white passivated

Ordering data

Type	Order No.	Pcs./Pkt.
NS 35/ 7,5 WH UNPERF 2000MM	1204122	5

Accessories		
NS 35/ 7.5 CAP	1206560	100

Technical data
Steel / galvanized

Ordering data

Type	Order No.	Pcs./Pkt.
NS 35/ 7,5 ZN UNPERF 2000MM	1206434	5

Accessories		
NS 35/ 7.5 CAP	1206560	100

Technical data
Copper / uncoated

Ordering data

Type	Order No.	Pcs./Pkt.
NS 35/ 7,5 CU UNPERF 2000MM	0801762	5

Accessories		
NS 35/ 7,5 CAP	1206560	100

Installation and mounting material - CABINET add-on

Component mounting

NS 35 DIN rails, flat design

Notes:

For dimensional drawings and ordering examples, see page 581.

For PPS ... DIN rail profile cutters, see page 402.



Aluminum



Stainless steel

General data

Material / coating

Technical data

Aluminum / uncoated

Technical data

Stainless steel V2A / uncoated

Ordering data

Type	Order No.	Pcs./Pkt.
NS 35/ 7,5 AL UNPERF 2000MM	0801704	5

Ordering data

Type	Order No.	Pcs./Pkt.
NS 35/ 7,5 V2A UNPERF 2000MM	0801377	5

Description

Color

DIN rail, unperforated, dimensions in acc. with EN 60715 - 35 x 7.5 mm, low design, supply length: 2 m, **Material: aluminum**

silver

DIN rail, unperforated, dimensions in acc. with EN 60715 - 35 x 7.5 mm, low design, supply length: 2 m, **Material: high-grade steel V2A**

silver

Accessories

NS 35/ 7,5 CAP	1206560	100
----------------	---------	-----

Accessories

NS 35/ 7,5 CAP	1206560	100
----------------	---------	-----

DIN rail end piece

for DIN rail NS35/7.5

NS 35 DIN rails, flat design, perforated

Notes:

¹⁾ Please specify the desired length in millimeters when placing your order. See order example.

For PPS ... DIN rail profile cutters, see page 402.



Steel, galvanized and thick layer passivated



Steel, galvanized

General data

Material / coating

Technical data

Steel / galvanized, passivated with a thick layer

Ordering data

Description

Color

DIN rail, perforated, in accordance with EN 60715 - 35 x 7.5 mm, galvanized and passivated with a thick layer, low design, supply length: 2 m

silver

DIN rail, perforated, in accordance with EN 60715 - 35 x 7.5 mm, galvanized and thick layer passivated, low design, supply length: 1 m

silver

DIN rail, perforated, in accordance with EN 60715 - 35 x 7.5 mm, galvanized and thick layer passivated, low design, for cabinet width / depth of 0.8 m

Length: 755 mm

silver

For cabinet width / depth of 1.2 m, supply length: 1155 mm

silver

DIN rail, perforated in accordance with EN 60715 - 35 x 7.5 mm, galvanized and thick layer passivated, low design, cut to length according to customer specifications¹⁾

silver

DIN rail, perforated, in accordance with EN 60715 - 35 x 7.5 mm, galvanized and thick layer passivated, chromated, low design, supply length: 1 m

silver

DIN rail, perforated, dimension in accordance with EN 60715 - 35 x 7.5 mm, hole dimension: 5.2 x 18 mm, supply length: 2 m

silver

DIN rail, perforated, dimensions in accordance with EN 60715 - 35 x 7.5 mm, galvanized, low design, supply length: 2 m

silver

DIN rail, perforated, dimension in accordance with EN 60715 - 35 x 7.5 mm, galvanized, low design, hole dimension: 5.2 x 18 mm, supply length: 2 m

silver

DIN rail end piece

for DIN rail NS35/7.5

Accessories

NS 35/ 7,5 CAP

1206560

100

Technical data

Steel / galvanized

Ordering data

Type

Order No.

Pcs./Pkt.

NS 35/ 7,5 PERF 2000MM

0801733

5

NS 35/ 7,5 PERF 1000MM

1207651

20

NS 35/ 7,5 PERF 755MM

1207640

10

NS 35/ 7,5 PERF 1155MM

1207666

10

NS 35/ 7,5 PERF/...

1208131

1

NS 35/ 7,5 PERF 1000MM

0807012

10

NS 35/ 7,5 PERF (18X5,2)2000MM

1210019

5

NS 35/ 7,5 ZN PERF 2000MM

1206421

5

NS 35/ 7,5 ZN PERF (18X5,2) 2M

0804278

25

Accessories

NS 35/ 7,5 CAP

1206560

100

Component mounting

NS 35 DIN rails, flat design, perforated



- High degree of dimensional accuracy and surface finish
- All DIN rails are also available cut to length

The DIN rails are available with various surface coatings and are suitable for the following applications:

- Zinc plated, for indoor applications
- White passivated, for indoor applications
- Aluminum; as a result of their improved conductivity, these versions can also be used as PEN busbars



Aluminum

General data

Material / coating

Technical data

Aluminum / uncoated

Ordering data

Description	Color
DIN rail, perforated , width: 35 mm, height: 7.5 mm, length: 2000 mm	aluminum color
DIN rail, perforated , width: 35 mm, height: 7.5 mm, length: 2000 mm	white
DIN rail, perforated , width: 35 mm, height: 7.5 mm, length: 2000 mm, hole dimension 5.2 x 25 mm, hole spacing 36 mm	white

Type	Order No.	Pcs./Pkt.
NS 35/ 7,5 AL PERF 2000MM	0814681	5

Accessories

DIN rail end piece
for DIN rail NS35/7.5

NS 35/ 7,5 CAP	1206560	100
-----------------------	----------------	-----



Steel, galvanized and white passivated



Steel, galvanized and white passivated

Technical data

Steel / Galvanized, white passivated

Ordering data

Type	Order No.	Pcs./Pkt.
NS 35/ 7,5 WH PERF 2000MM	1204119	5

Accessories

NS 35/ 7,5 CAP	1206560	100
----------------	---------	-----

Technical data

Steel / Galvanized, white passivated

Ordering data

Type	Order No.	Pcs./Pkt.
NS 35/7,5 WHPERF(5,2X25)2000MM	1206418	5

Accessories

NS 35/ 7,5 CAP	1206560	100
----------------	---------	-----

Installation and mounting material - CABINET add-on

Component mounting

NS 35 DIN rails, tall design

Notes:
For dimensional drawings and ordering examples, see page 581.
For PPS ... DIN rail profile cutters, see page 402.
¹⁾ Please specify the desired length in millimeters when placing your order. See order example.
²⁾ Please specify the desired length and borehole when placing your order. See order example.



Steel, galvanized and thick layer passivated



Steel, galvanized and white passivated

General data

Material / coating

Description

Color

DIN rail, unperforated, in accordance with EN 60715 - 35 x 15 mm, galvanized and passivated with a thick layer, tall design, supply length: 2 m

silver

DIN rail, unperforated, in accordance with EN 60715 - 35 x 15 mm, galvanized and thick layer passivated, low design, supply length: 1 m

DIN rail, unperforated in accordance with EN 60715 - 35 x 15 mm, galvanized and thick layer passivated, tall design, cut to length according to customer specifications¹⁾

silver

DIN rail, unperforated in accordance with EN 60715 - 35 x 15 mm, galvanized and thick layer passivated, tall design, cut to length according to customer specifications and provided with mounting holes²⁾

silver

DIN rail, unperforated, similar to EN 60715 - 35 x 15 mm, 1.5 mm thick, white passivated, tall design, supply length: 2 m

white

DIN rail, unperforated similar to EN 60715 - 35 x 15 mm, 1.5 mm thick, tin-plated, tall design, supply length: 2 m

silver

DIN rail, unperforated similar to EN 60715 - 35 x 15 mm, 1.5 mm thick, tall design, supply length: 2 m, **Material: copper**

copper-colored

DIN rail, unperforated in accordance with EN 60715 - 35 x 15 mm, 2.3 mm thick, galvanized and thick layer passivated, tall design, for universal cut, supply length: 2 m

silver

for DIN rail NS35/15

Technical data

Steel / Galvanized, passivated with a thick layer

Ordering data

Type

Order No.

Pcs./Pkt.

NS 35/15 UNPERF 2000MM

1201714

5

NS 35/15 UNPERF 1000MM

1207655

20

NS 35/15 UNPERF/...

1208144

1

NS 35/15 UNPERF/SO/...

1208157

1

Accessories

NS 35/15 CAP

1206573

100

Technical data

Steel / Galvanized, white passivated

Ordering data

Type

Order No.

Pcs./Pkt.

NS 35/15 WH UNPERF 2000MM

1204135

5

Accessories

NS 35/15 CAP

1206573

100



Steel, galvanized



Copper



Steel, galvanized, and thick layer passivated, material thickness 2.3 mm

Technical data		
Steel / Galvanized		
Ordering data		
Type	Order No.	Pcs./Pkt.
NS 35/15 ZN UNPERF 2000MM	1206586	5
Accessories		
NS 35/15 CAP	1206573	100

Technical data		
Copper / uncoated		
Ordering data		
Type	Order No.	Pcs./Pkt.
NS 35/15 CU UNPERF 2000MM	1201895	5
Accessories		
NS 35/15 CAP	1206573	100

Technical data		
Steel / Galvanized, passivated with a thick layer		
Ordering data		
Type	Order No.	Pcs./Pkt.
NS 35/15-2,3 UNPERF 2000MM	1201798	5
Accessories		

Component mounting

NS 35 DIN rails, tall design, perforated



- The design of the DIN rails complies with European standard EN 60715
- High degree of dimensional accuracy and surface finish
- All DIN rails are also available cut to length

The DIN rails are available with various surface coatings and are suitable for the following applications:

- Zinc plated, for indoor applications
- White passivated, for indoor applications
- Zinc plated and thick layer passivated, for indoor and protected outdoor applications
- Aluminum and copper. As a result of their improved conductivity, these versions can also be used as PEN busbars

Notes:

For dimensional drawings and ordering examples, see page 581.

For PPS ... DIN rail profile cutters, see page 402.

¹⁾ Please specify the desired length in millimeters when placing your order. See order example.



Steel, galvanized and thick layer passivated

General data

Material / coating

Description	Color
DIN rail, perforated , in accordance with EN 60715 - 35 x 15 mm, galvanized and passivated with a thick layer, tall design, supply length: 2 m	silver
DIN rail, perforated , in accordance with EN 60715 - 35 x 15 mm, galvanized and thick layer passivated, tall design, supply length: 1 m	silver
DIN rail, perforated , in accordance with EN 60715 - 35 x 15 mm, galvanized and thick layer passivated, tall design, for cabinet width / depth of 0.8 m	silver
Length: 755 mm	silver
For cabinet width / depth of 1.0 m, supply length: 955 mm	silver
For cabinet width / depth of 1.2 m, supply length: 1155 mm	silver
DIN rail, perforated in accordance with EN 60715 - 35 x 15 mm, galvanized and thick layer passivated, tall design, supply length: 2 m, cut to length according to the customer specifications ¹⁾	silver
DIN rail, perforated , in accordance with EN 60715 - 35 x 15 mm, white passivated, tall design, supply length: 2 m	white
DIN rail, perforated similar to EN 60715 - 35 x 15 mm, 1.5 mm thick, tin-plated, tall design, supply length: 2 m	silver
DIN rail, perforated , in accordance with EN 60715 - 35 x 15 mm, galvanized and thick layer passivated, tall design, hole size: 5.2 x 18 mm, supply length: 2 m	silver
DIN rail, perforated , in accordance with EN 60715 - 35 x 15 mm, white passivated, tall design, hole size: 5.2 x 25 mm, supply length: 2 m	white
DIN rail, perforated , similar to EN 60715 - 35 x 15 mm, 1.5 mm thick, galvanized, tall design, hole size: 5.2 x 18 mm, supply length: 2 m	silver

Technical data

Steel / Galvanized, passivated with a thick layer

Ordering data

Type	Order No.	Pcs./Pkt.
NS 35/15 PERF 2000MM	1201730	5
NS 35/15 PERF 1000MM	1207658	10
NS 35/15 PERF 755MM	1207679	10
NS 35/15 PERF 955MM	1207682	10
NS 35/15 PERF 1155MM	1207695	10
NS 35/15 PERF/...	1208160	1
NS 35/15 PERF (18X5,2) 2000MM	1210006	5



Steel, galvanized and white passivated



Steel, galvanized

Technical data

Steel / Galvanized, white passivated

Ordering data

Type	Order No.	Pcs./Pkt.
NS 35/15 WH PERF 2000MM	0806602	5
NS 35/15 WH PERF(5,2X25)2000MM	1206476	5

Technical data

Steel / Galvanized

Ordering data

Type	Order No.	Pcs./Pkt.
NS 35/15 ZN PERF 2000MM	1206599	5
NS 35/15 ZN PERF(18X5,2)2000MM	3240571	25

Component mounting

NS 32 DIN rails

Notes:
For PPS ... DIN rail profile cutters, see page 402.
1) Please specify the desired length in millimeters when placing your order. See order example.
2) Please specify the desired length and borehole when placing your order. See order example.



Steel, galvanized and thick layer passivated



Aluminum

General data
Material / coating

Technical data

Steel / Galvanized, passivated with a thick layer

Ordering data

Type	Order No.	Pcs./Pkt.
NS 32 UNPERF 2000MM	1201015	5
NS 32 PERF 2000MM	1201002	5

Technical data

Aluminum / uncoated

Ordering data

Type	Order No.	Pcs./Pkt.
NS 32 AL UNPERF 2000MM	1201028	5

Description	Color
DIN rail, unperforated, in accordance with EN 60715 - G32, supply length: 2 m, galvanized and thick layer passivated	silver
DIN rail, perforated, in accordance with EN 60715 - G32, galvanized and thick layer passivated, supply length: 2 m	silver
DIN rail, unperforated similar to EN 60715, supply length: 2 m, Material: Aluminum	silver
DIN rail, unperforated, similar to EN 60715 - G32, supply length: 2 m, material: Copper	copper-colored
DIN rail, unperforated, in accordance with EN 60715 - G32, supply length: 2 m, material: Copper	copper-colored
DIN rail, unperforated, in accordance with EN 60715 - G32, 1.5 mm thick, white passivated, supply length: 2 m	white
DIN rail, unperforated, in accordance with EN 60715 - G32, galvanized and thick layer passivated, tall design, cut according to customer request ¹⁾	silver
DIN rail, unperforated, in accordance with EN 60715 - G32, galvanized and thick layer passivated, tall design, cut according to customer request and equipped with fixing holes ²⁾	silver



Copper



Steel, galvanized and white passivated



Steel, galvanized and thick layer passivated

Technical data		
Copper / uncoated		
Ordering data		
Type	Order No.	Pcs./Pkt.
NS 32 CU/120QMM UNPERF 2000MM	1201280	5
NS 32 CU/35QMM UNPERF 2000MM	1201358	5

Technical data		
Steel / Galvanized, white passivated		
Ordering data		
Type	Order No.	Pcs./Pkt.
NS 32 WH UNPERF 2000MM	1204106	5

Technical data		
Steel / Galvanized, passivated with a thick layer		
Ordering data		
Type	Order No.	Pcs./Pkt.
NS 32 UNPERF/...	1208173	1
NS 32 UNPERF/SO/...	1208186	1

Component mounting

NS 35 DIN rails, tall design that supports the use of slide nuts

- The NS 35/15 AL DIN rail has been designed to accommodate GLM ... slide nuts
- The slide nuts even allow components without an additional snap-on foot to be mounted

Notes:
For dimensional drawings and ordering examples, see page 581.



NS 35, 15 mm high DIN rail with slide nut guide

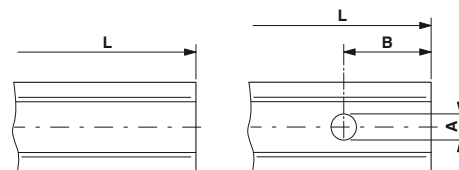
Dimensions		Technical data		
	[mm]	Width	Length	Height
General data		35	2000	15
Material		Aluminum		
Ordering data				
Description		Type	Order No.	Pcs./Pkt.
DIN rail, unperforated similar to EN 60715 - 35 x 15 mm, deep-drawn, tall design, with slide nut guide, supply length: 2 m		NS 35/15 AL UNPERF 2000MM	1201756	5
	silver			
DIN rail, unperforated similar to EN 60715 - 35 x 15 mm, deep-drawn, tall design, with slide nut guide, cut to length according to customer specifications		NS 35/15 AL UNPERF/...	1210213	1
	silver			
Slide nut, for DIN rail NS 35/15-AL, for fixing devices, material: Steel				
M4	silver	GLM 4	1201769	100
M5	silver	GLM 5	1201772	100
M6	silver	GLM 6	1201785	100

Example configuration for NS 35/15 UNPERF/SO/...:

(minimum order quantity 20 units)

When ordering 20 unperforated NS 35/15 DIN rails with 6 mm \varnothing end holes at both ends (as 20 mm elongated holes, the hole center of which is 50 mm from the end of the rail) with a length of 550 mm, the following information must be given:

Quantity	Order No.	Length in mm	Dim. A	Dim. B	Dim. C
20		550	6	50	20

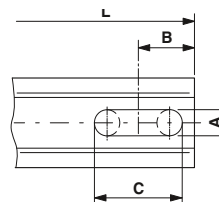


Example configuration for NS 35/7,5 UNPERF/...:

(minimum order quantity 20 units)

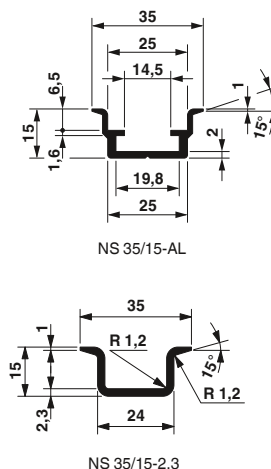
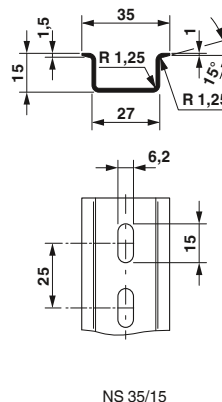
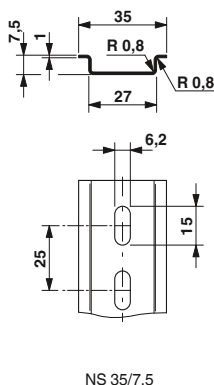
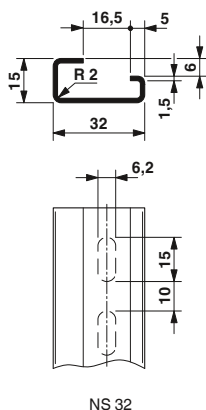
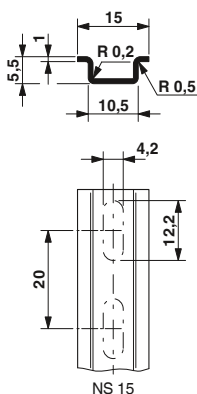
When ordering 20 unperforated NS 35/7,5 DIN rails without end holes with a length of 1750 mm, the following information must be given:

Quantity	Order No.	Length in mm
20		1750



L = length
A = hole diameter [mm]
B = distance between end and hole center [mm]
C = length of elongated hole [mm]
The following dimensions are possible:
Round hole: C = 0
Elongated hole: C = 10, 15, 20, or 25 mm

Dimensional drawings for DIN rails



Installation and mounting material - CABINET add-on

Component mounting

Snap-on end bracket, for NS 15 and NS 35 DIN rails

- The geometry of the CLIPFIX end bracket ensures reliable fixing on the different DIN rail systems
- Overall width of just 5.2 mm
- Parking facility for bridges and connectors
- Large area for marking



End bracket for NS 15 DIN rail



End bracket for NS 35 DIN rail

Dimensions	
	[mm]
General data	
Material	
Flammability rating according to UL 94	

Technical data		
Width	Length	Height
5.2	22	22.6
PA		
V2		

Description	Color
End bracket , for snapping onto NS 15, 5.2 mm wide, can be marked with ZB 5 and ZBF 5, KLM, KLM 2 and KLM 3, provides facilities for retaining bridges and test accessories	
	gray
End bracket , for snapping onto NS 35, 5.15 mm wide, can be marked with ZB 5 and UCT-EM (30X5), parking option for bridges and test plugs	
	gray
Material: V0	gray
End bracket , to snap on NS 35, 9.5 mm wide, can be marked with ZB 6, ZB 8/27, KLM...	
	gray

Ordering data		
Type	Order No.	Pcs./Pkt.
CLIPFIX 15	3022263	50

Technical data		
Width	Length	Height
5.15	48.5	35
PA		
V2		

Ordering data		
Type	Order No.	Pcs./Pkt.
CLIPFIX 35-5	3022276	50
CLIPFIX 35-5 V0	3032350	50
CLIPFIX 35	3022218	50

Screw-on end bracket, for NS 35 and NS 32 DIN rails

- With universal foot for NS 35 and NS 32 DIN rails
- High and low designs
- Large area for marking



For NS 35 and NS 32 DIN rails



For multi-level terminal blocks on NS 35 and NS 32 DIN rails

Dimensions	
	[mm]
General data	
Material	
Tightening torque	[Nm]
Flammability rating according to UL 94	

Technical data		
Width	Length	Height
9.5	50.5	35.3
PA		
0.4 - 0.5		
V2		

Description	Color
End bracket , to screw on, for NS 35 and NS 32, can be marked with ZB 6, KLM, KLM-A and UBE	
	gray
Universal end bracket , to screw on, for NS 35 and NS 32, for supporting the ends of double level and three level terminal blocks, can be marked with ZB 10	
	gray

Ordering data		
Type	Order No.	Pcs./Pkt.
E/UK	1201442	50

Technical data		
Width	Length	Height
10	55.5	50
PA		
0.4 - 0.5		
V2		

Ordering data		
Type	Order No.	Pcs./Pkt.
E/UK 1	1201413	50

Screw-on end bracket, for NS 15 DIN rail

The E/MBK end bracket has been specially designed for the MBK miniature IEC terminal blocks.

- Can be screwed onto NS 15 DIN rails
- Can be mounted directly on the mounting plate as an MBK terminal block base
- Large area for marking



For miniature IEC terminal blocks on NS 15 DIN rail

Dimensions	
	[mm]
General data	
Material	PA
Tightening torque	[Nm] 0.4 - 0.5
Flammability rating according to UL 94	V2
Description	Color
End bracket , to snap on NS 15, for slide-on miniature terminal blocks, can be fastened with a screw, can be marked with KLM 1	
	gray
End bracket , to screw on NS 15, 6.1 mm wide, can be fastened with a screw, can be marked with KLM 1	
	gray

Technical data			
Width	Length	Height	
6.2	22	11.4	
Ordering data			
Type	Order No.	Pcs./Pkt.	
E/MBK	1401637	100	



For NS 15 DIN rail

Technical data			
Width	Length	Height	
6.1	21.2	18	
Ordering data			
Type	Order No.	Pcs./Pkt.	
E/MK 1	1421659	100	

Screw-on end bracket, for NS 35 and NS 32 DIN rails

- The E/AL-NS 35 provides optimum support for large terminal blocks and devices.
- Large area for marking



For NS 35 DIN rail

Dimensions	
	[mm]
General data	
Material	PA
Tightening torque	[Nm] 0.4 - 0.5
Flammability rating according to UL 94	V2
Description	Color
End bracket , to screw on NS 35, can be equipped with terminal strip marker KLM-A or ZB 8	
	gray
	black
End bracket , aluminum, for screwing on, for end support of 50 - 300 mm ² terminal blocks, can be marked with ZB 10, for mounting on NS 35...	
	silver
End bracket , aluminum, for screwing on, for end support of UKH 50 - UKH 240, can be marked with ZB 10, for mounting on NS 32...	
	silver

Technical data			
Width	Length	Height	
9.5	48.6	32.8	
Ordering data			
Type	Order No.	Pcs./Pkt.	
E/NS 35 N	0800886	50	
E/NS 35 N BK	0804271	50	



For terminal blocks from 50 mm² on NS 35 and NS 32 DIN rails

Technical data			
Width	Length	Height	
10	59	44	
Ordering data			
Type	Order No.	Pcs./Pkt.	
E/AL-NS 35	1201662	10	
E/AL-NS 32	1201659	10	